



BY-PASS POT FEEDERS

2 USG
5 USG

#PF010380
#PF010381

Pace By-Pass Feeders are designed to provide a rugged and dependable means of introducing treatment chemicals into closed loop water recirculating systems.

These are commonly used in hot and chilled water systems. Available in two sizes, this unit is compatible and interchangeable with many competitive units on the market.

Pace By-Pass Feeders offer threaded, quick opening high pressure closures.

Features and Benefits:

- Carbon steel construction
- Available in 2 gallon (7.6 L) and 5 gallon (18.9 L) capacities
 - 2 gallon constructed of 5 mm pipe: seamless body design
 - 5 gallon constructed of 6 mm rolled plate
- Blue epoxy finish
- Caps – constructed of cast steel with epoxy coated platen with Buna O-ring
- 300 psi @ 200°F – allows for broad range of installation parameters
- “Wide-mouth” 3½” threaded closure high pressure cap for safety and ease of access
- Connections: 4 @ ¾” ports (2 upper, 2 lower)
- Domed bottom



PART ORDERING INFORMATION

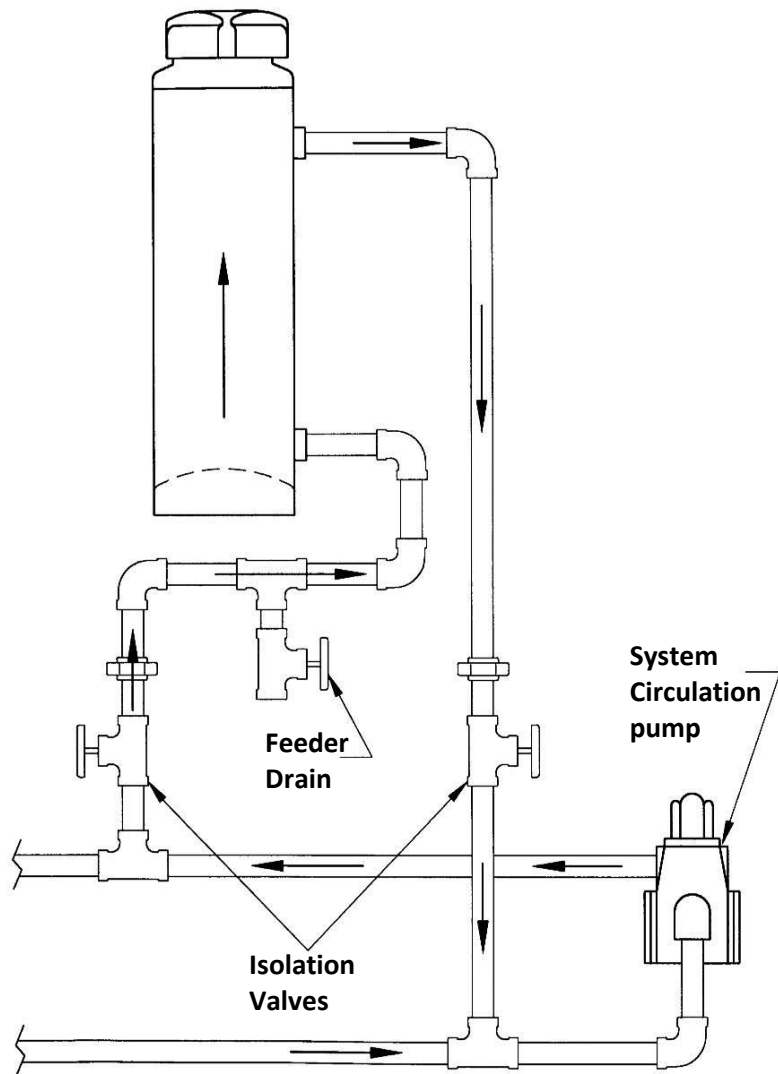
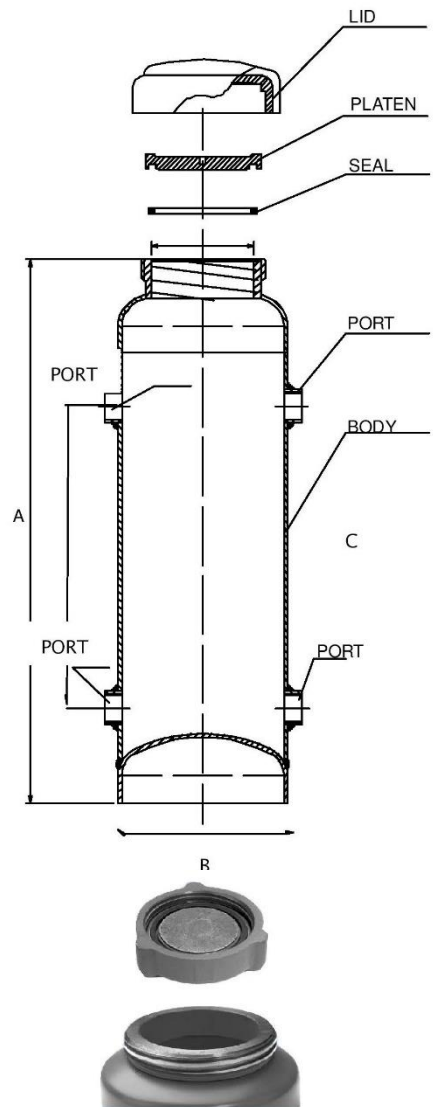
Pot Feeder Size	Pace Part #	# Ports	Pressure
2 gallon (7.6 litre)	PF010380	4 x ¾” ports	300 psi
5 gallon (18.9 litre)	PF010381	4 x ¾” ports	300 psi
O-Ring replacement	PX010391		



PACE Shop Drawing

Please note: drawing is for general reference only and should not be used for sizing or piping layout.

Model	Capacity	A	B	C	Ship Weight
PF010380	2 US gallon	20" (508.0 mm)	6.26" (159 mm)	12 ³ / ₄ " (323.9 mm)	27.5 lb (12.4 kg)
PF010381	5 US gallon	19 ³ / ₄ " (501.5 mm)	9.84" (250 mm)	10 ¹ / ₂ " (266.7 mm)	42.0 lb (19.1 kg)



HIGH PRESSURE CAP: course thread, 2½ turn design, rated up to 300 psi